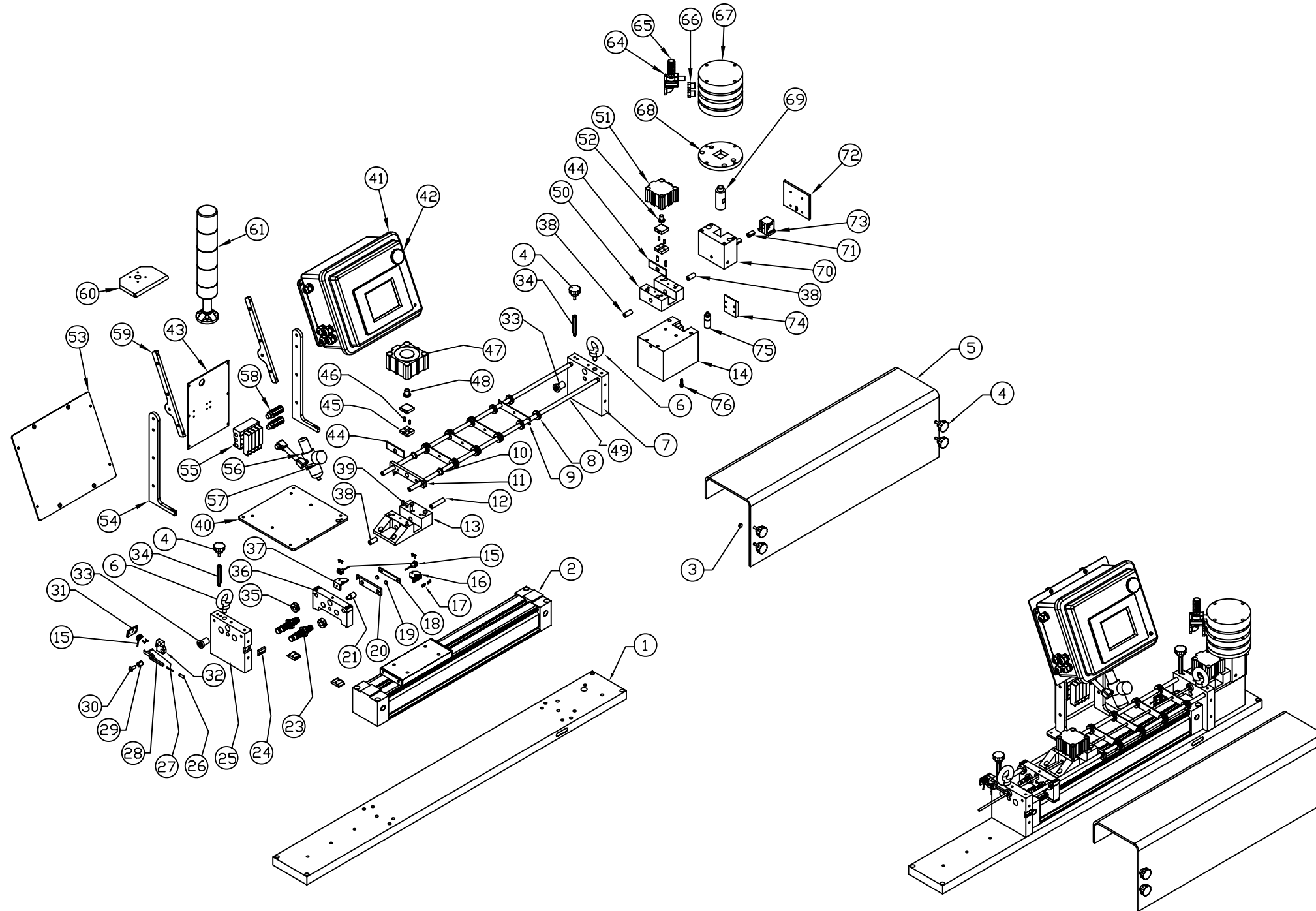


NOTES: #3 UNIBODY - #4&#5 UNIBODY - #4&#5 QUICK RELEASE

- #3 PWS 2-PLANE ASSY, REF 1003-002 & BRKT 4004-126
- #3 PWS 4-PLANE ASSY, REF 1003-004 & BRKT 4004-171
- #4 PWS 2-PLANE ASSY, REF 1004-012 & BRKT 4004-158
- #4 PWS 2-PLANE QR ASSY, REF 1004-002 & BRKT 4004-146
- #5 PWS 2-PLANE ASSY, REF 1005-012 & BRKT 4004-172
- #5 PWS 2-PLANE QR ASSY, REF 1005-002 & BRKT 4004-150



No.	PART NUMBER		QTY
1	4004-458	MAIN BASE PLATE	1
2	9400-406	BAND CYLINDER	1
3	9100-013	MAGNET	1
4	9010-011	PLASTIC KNOB	6
5	4100-107	LEXAN COVER	1
6	9010-020	EYEBOLT	2
7	4004-101	FRONT SUPPORT	1
8	9008-013	SHIM WASHER	16
9	4004-9XX	ACCUMULATING GUIDE PLATE	4
10	9311-001	DILITE BUSHING	2
11	4004-167	PHOTO TARGET PLATE	1
12	4004-58XX	FEED GUIDE	1
13	4004-102	REAR GRIPPER BODY	1
14	4004-105	CUTTER BASE	1
15	9100-044	SENSOR	3
16	4004-165	FRONT PHOTO BRACKET	1
17	4004-166	NUT (FRONT PHOTO BRKT #16)	2
18	4004-123	TRAVELING STOP SPACER	1
19	4004-124	TRAVELING STOP PIN	2
20	4004-168	TARGET STOP PLATE	1
21	9011-020	STOP BUTTON	1
22	9020-028	HOUR GLASS SPRINGS (NOT SHOWN)	10
23	9401-001	SHOCK STOP	2
24	9100-013	MAGNETIC REED SWITCH	1
25	4004-100	REAR SUPPORT	1
26	9802-007	WD NYLON TIP	1
27	9007-024	WD DOWEL PIN (REAR SENSOR)	2
28	4004-169	WD SENSOR ARM	1
29	4000-090	WD PIVOT BUSHING	1
30	9002-118	WD BHCS ATTACH	1
31	4000-088	WD SENSOR PLATE	1
32	4004-170	WD SENSOR MOUNT BRACKET	1
33	9800-008	CERAMIC INSERT	2
34	9011-015	HEX STAND OFF	2
35	9011-008	COLLAR (SPLIT)	2
36	4004-104	CLAMPING REAR STOP	1
37	4004-164	REAR PHOTO BRACKET	1
38	4004-5XX	FEED GUIDE	3
39	9007-041	DOWEL PIN (GRIPPER)	4
40	4000-093	MAIN MOUNT PLATE	1
41	4000-001	CONTROL BOX ASSY	1
42	9100-108	PUSH E-STOP BUTTON	1
43	4000-094	AIR MOUNTING PLATE	1
44	4004-113	GRIPPER WEAR PLATE	2
45	4004-6XX	GRIPPER (2 PCS. PER SET)	2
46	9020-022	SPRING (INTERNAL GRIPPER)	4
47	9400-528	GRIPPER CYLINDER 80MM	1
48	4000-077	GRIPPER PIN 80MM	1
49	4001-535	ACCUMULATING GUIDE SHAFT	2
50	4004-103	FRONT GRIPPER BODY	1
51	9400-512	GRIPPER CYLINDER 63MM	1
52	4000-076	GRIPPER PIN 63MM	1
53	4000-057	CONTROL ADAPTER PANEL	1
54	4000-096	UPRIGHT CONTROL BRACKET	2
55	9403-024	MAC 400 SERIES VALVE ASSY.	1
56	9402-008	AIR REGULATOR 3000	1
57	9402-006	AIR REGULATOR GAGE	1
58	9405-010	EXHAUST SILENCER	2
59	4000-095	CONTROL BOX BRACKET	2
60	4000-083	STACK LIGHT BRACKET	1
61	9103-008	STACK LIGHT	1
62			
63			
64	9402-009	DUMP VALVE	3
65	9405-011	SILENCER	1
66	9404-038	FILTER	2
67	9400-533	BIMBA TRIPLE ACTING	1
68	4004-118	CYLINDER ADAPTER PLATE	1
69	4010-108	CYLINDER EXTENDER	1
70	4004-106	CUTTER BODY	1
71	4004-	CUTTING QUILLS	1
72	4004-110	CUTTER ARM COVER	1
73	4004-109	TRAVELING QUILL BLOCK	1
74	4004-111	GAS COVER PLATE	1
75	9020-500	NITROGEN GAS SPRING	2
76	900M-041	6MM X 20 SCREW	1
77			
78			
79			
80			

4L SF&C QUILL ON QUILL 12" ASSY & PARTS LIST



TOLERANCE UNLESS OTHERWISE STATED	CAD	DRAWING / PART NO.
± 3"	DWN GDH	4004-022
± 0.0003	CHK	PART NAME
± 0.0002	SCALE	12" SF&C #4L ASSY.
± 0.0005	DATE 080508	CUSTOMER
± 0.0005		EXPLODED VIEW

REV	ECN	CHG BY	DATE