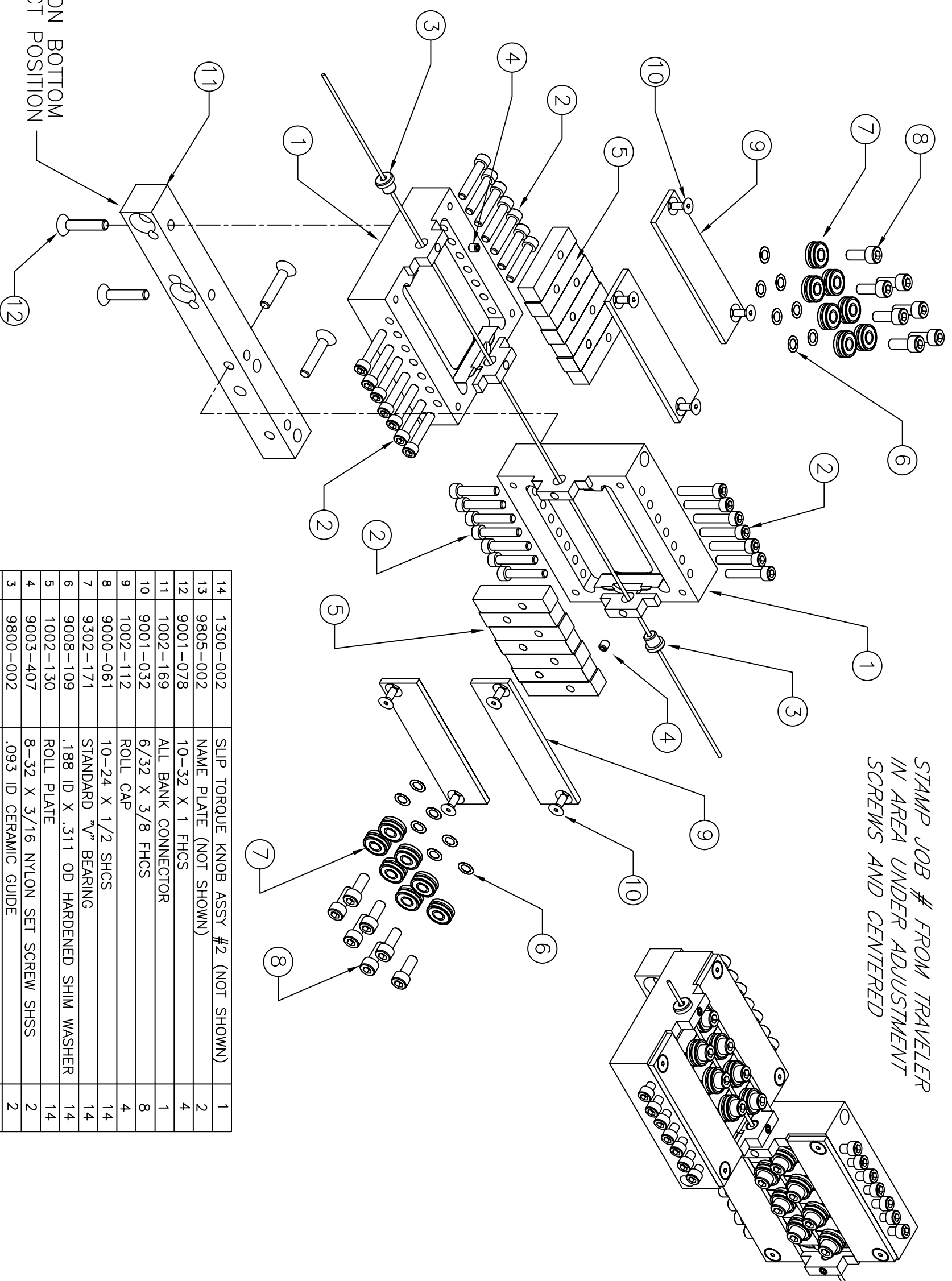


STAMP JOB # FROM TRAVELER  
IN AREA UNDER ADJUSTMENT  
SCREWS AND CENTERED



MACHINING MARK ON BOTTOM  
USED FOR CORRECT POSITION  
OF CONNECTOR

ITEM	PART NUMBER	DISCRPTION	QTY
14	1300-002	SLIP TORQUE KNOB ASSY #2 (NOT SHOWN)	1
13	9805-002	NAME PLATE (NOT SHOWN)	2
12	9001-078	10-32 X 1 FHCS	4
11	1002-169	ALL BANK CONNECTOR	1
10	9001-032	6/32 X 3/8 FHCS	8
9	1002-112	ROLL CAP	4
8	9000-061	10-24 X 1/2 SHCS	14
7	9302-171	STANDARD "V" BEARING	14
6	9008-109	.188 ID X .311 OD HARDENED SHIM WASHER	14
5	1002-130	ROLL PLATE	14
4	9003-407	8-32 X 3/16 NYLON SET SCREW SHSS	2
3	9800-002	.093 ID CERAMIC GUIDE	2
2	9000-052	8-32 X 7/8 SHCS	28
1	1002-111	UNIBODY HOUSING #2	2

REV	ECN	CHG BY	DATE

TOLERANCE UNLESS OTHERWISE STATED		CAD	DRAWING / PART NO.
$\Delta$	$\pm .3$	DWN	1002-002
$\perp$	$\pm 0.0003$	KPL	PART NAME
$\text{L}$	$\pm 0.0002$	CHK	1002 2 PLANE
$\text{X}$	$\pm .015$	SCALE	EXPLODED ASSY
$\text{XXX}$	$\pm .005$	DATE	CUSTOMER
$\text{XXXX}$	$\pm .0005$	DATE	3/28/02

